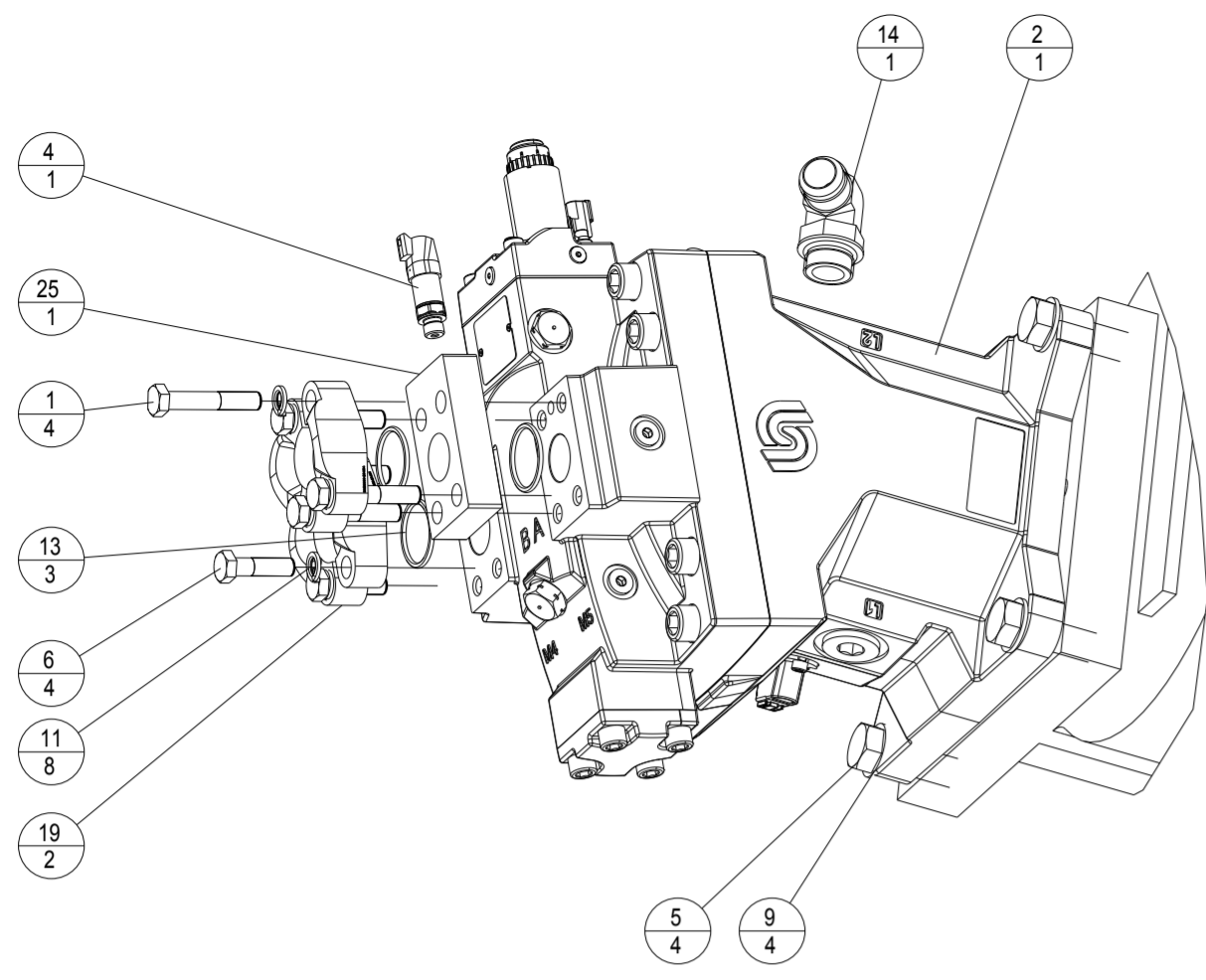


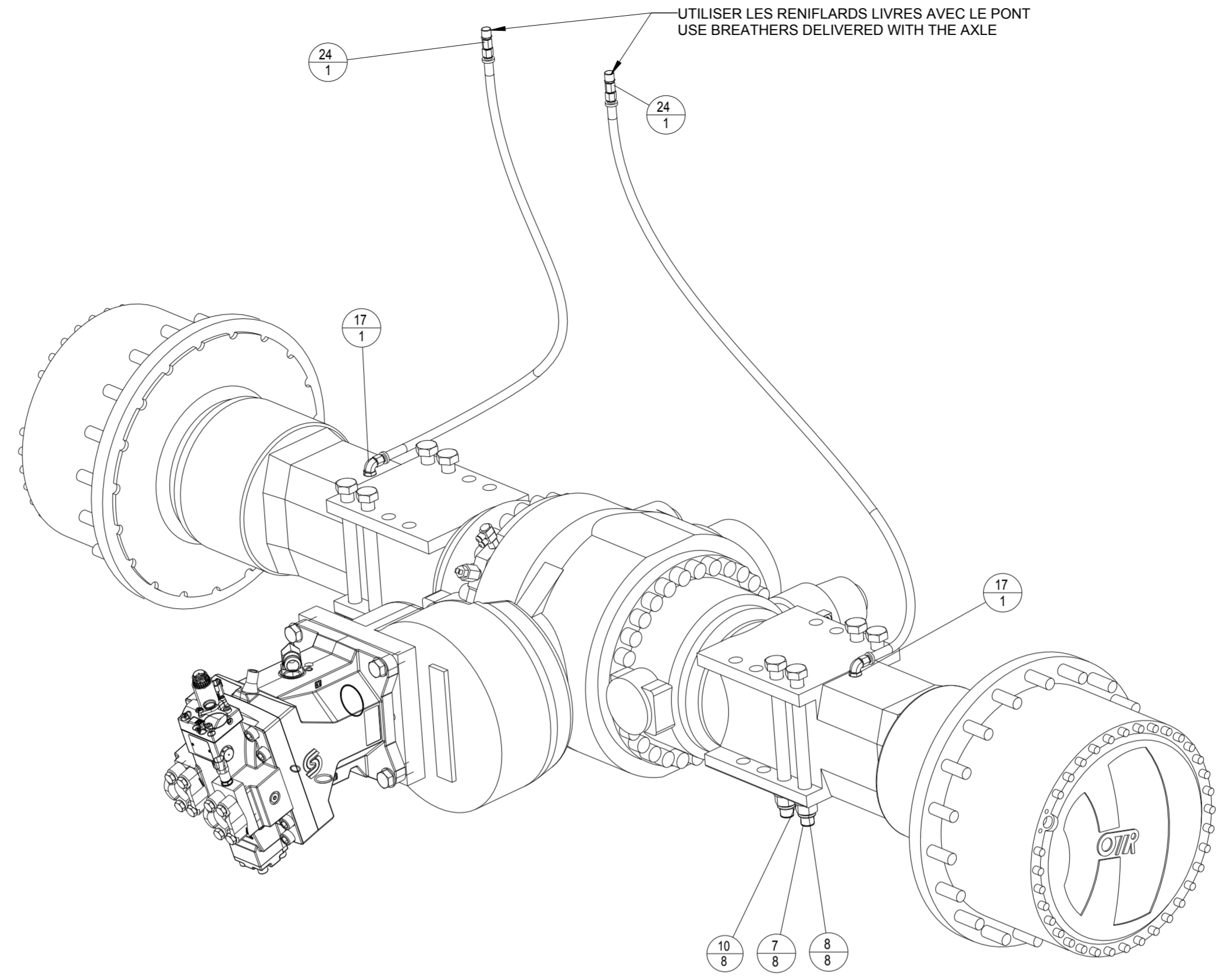
7. DRIVE TRAIN / TRAIN ROULANT

604 320 452A	ASSY FRONT AXLE/REDUCER NEO	<i>ENS. PONT/REDUCTEUR AV NEO</i>
604 320 412B	ASSY REAR AXLE/REDUCER NEO	<i>ENS. PONT/REDUCTEUR AR NEO</i>
604 390 094A	AXLE BREATHER FRT & REAR	<i>RENIFLARD DE PONT AV & AR</i>
604 430 203C	ASSY STEERING VALVE	<i>ENSEMBLE VANNE DE DIRECTION</i>
604 510 133C	WHEEL 66*43/44-25 20P GY S	<i>ROUE 66*43/44-25 20P GY S.</i>

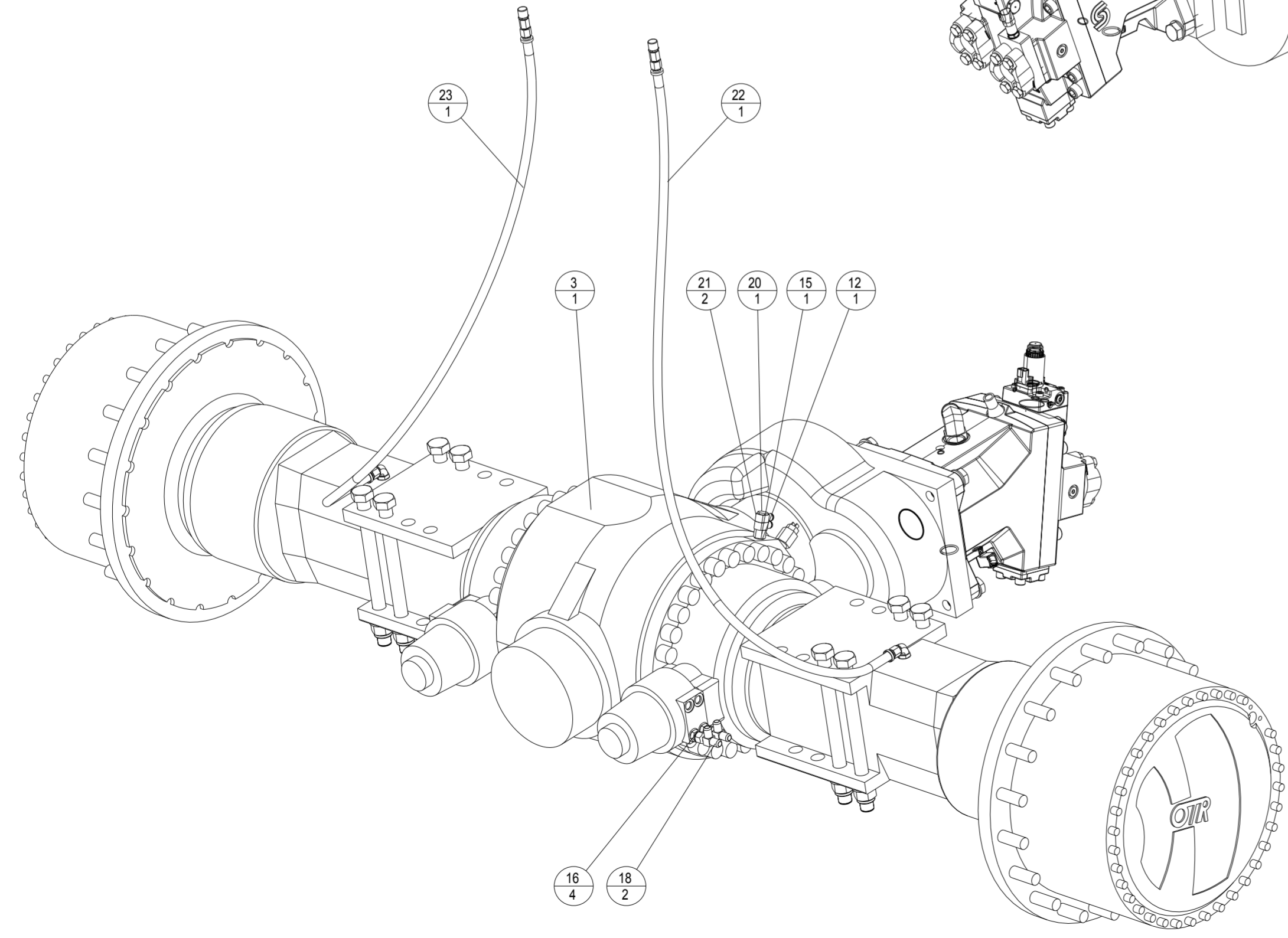


ECHELLE 0,200

Assurer l'étanchéité en utilisant de la pate à joint lors du montage du moteur.

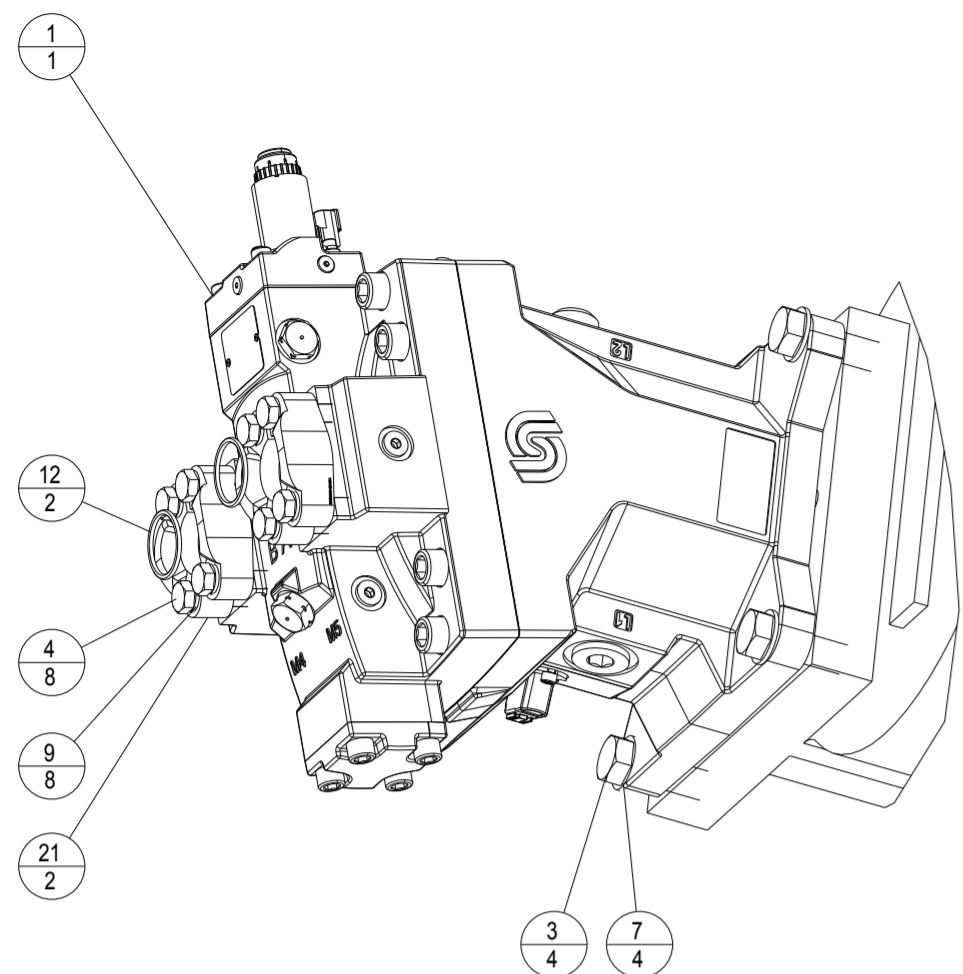


UTILISER LES RENIFLARDS LIVRES AVEC LE PONT
USE BREATHERS DELIVERED WITH THE AXLE



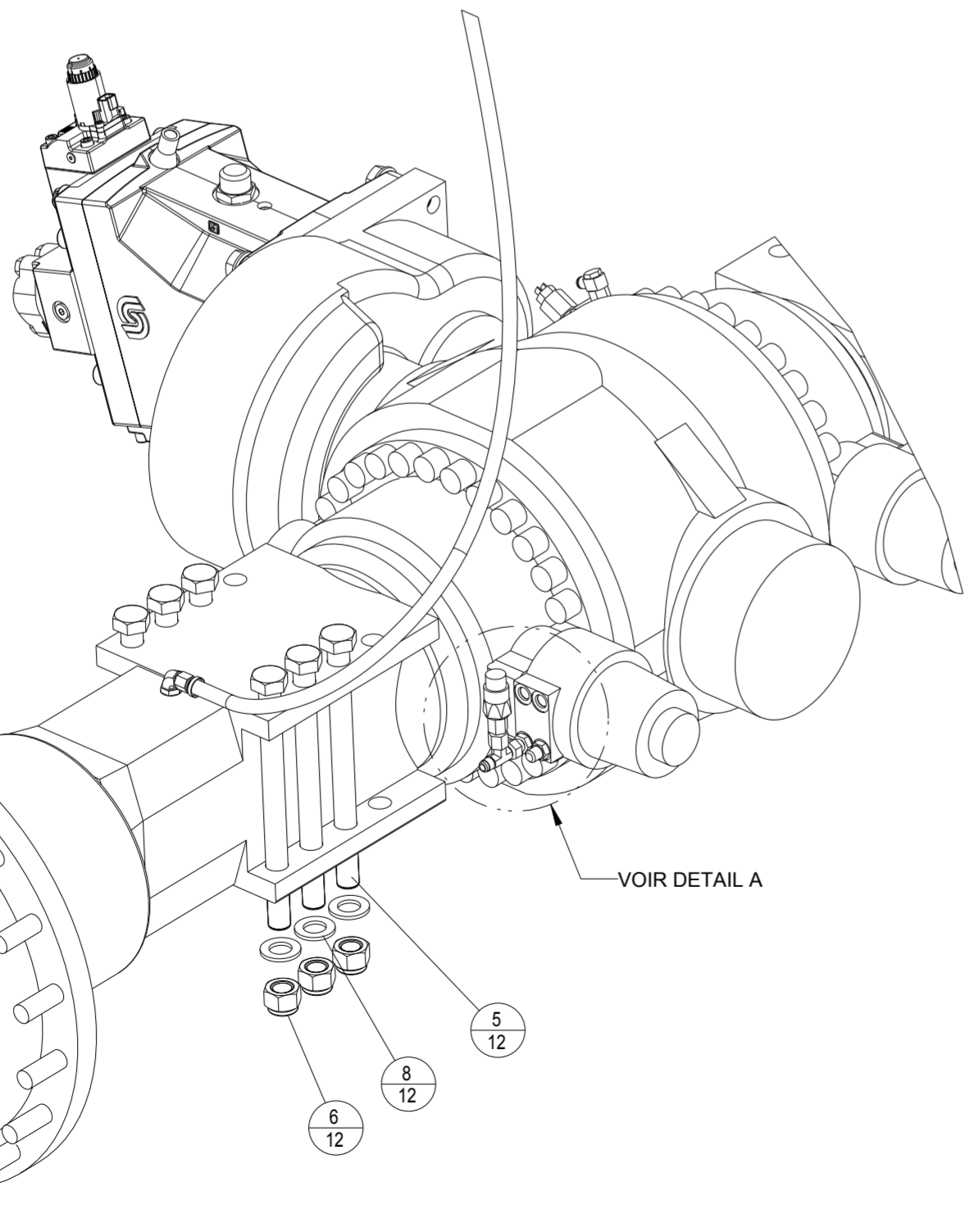
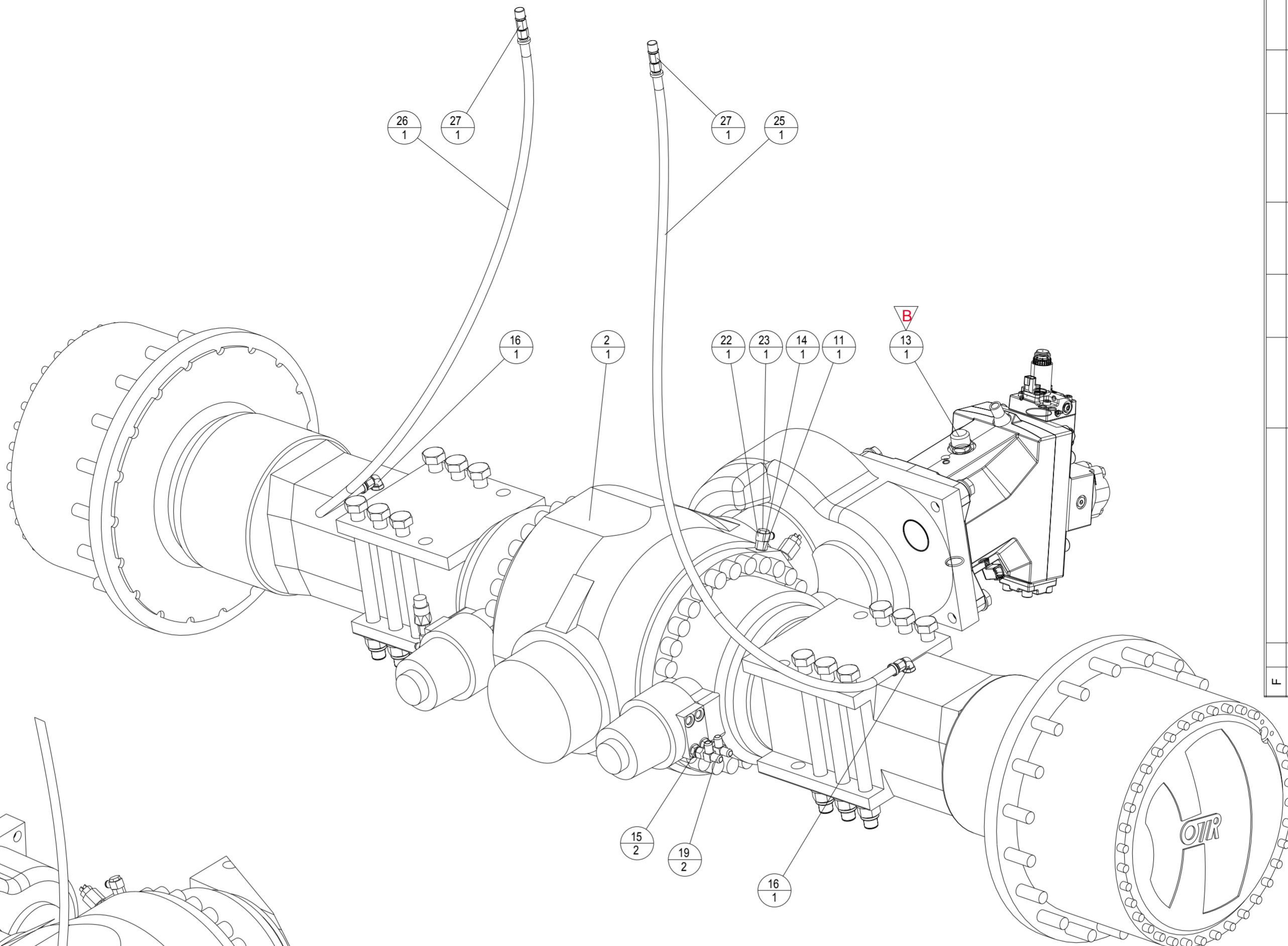
REP ITM	CODE SERCEL PART NUM.	DESIGNATION DESCRIPTION	REFERENCE / SPECIF / LA PART NUMBER / SPECIF.	QTE QTY
1	10005061	VIS H M12-70 10.9 ZT / BOLT HEX ZINC-PLATED	SERCEL	4
2	10015165	MOTEUR HYDR. H1 B250 / HYDR. MOTOR H1 B250	SERCEL	1
3	10015167	PONT OMSI 392.98 / AXLE	400150873	1
4	10037519	CAPTEUR DE PRESSION 0-600 B / PRESSURE SENSOR		1
5	211111453	VIS H M20-60 8.8 Z.B. / BOLT HEX ZINC-PLATED	SERCEL	4
6	211121389	VIS H M12-45 10.9 Z.DEG / BOLT HEX ZINC-PLATED	SERCEL	4
7	211124895	VIS H M24-300 10.9 NOIRE / BOLT HEX ZINC-PLATED	SERCEL	8
8	216421240	ECROU M24, B. PLAST CL10 / NUT LOCK	SERCEL	8
9	217141200	RONDILLE M20,U,Z.B / PLAIN HEAVY DUTY WASHER	SERCEL	4
10	217141240	RONDILLE M24,U,Z.B / PLAIN HEAVY DUTY WASHER	SERCEL	8
11	217941120	RONDILLE, W12 Z.B / WASHER LOCK	SERCEL	8
12	237001402	JOINT CUIVRE Ø14,3 / COPPER SEAL	SERCEL	1
13	237403703	JOINT TOR. 37.69 X 3.53 NBR 90 SH / O RING	SERCEL	3
14	271393771	ADAPTEUR, C50XS 25 - 1-5/16 / FITTING	SERCEL	1
15	271714311	ADAPTEUR M/F M14 -1/4BSP / ADAPTOR	SERCEL	1
16	271791331	ADAPTEUR 6M14F82EDMX / FITTING	SERCEL	4
17	271793331	ADAPTEUR, 6M14C80MXS / FITTING	SERCEL	2
18	274491331	ADAPTEUR R6XS10 / FITTING T	SERCEL	2
19	277470001	DEMI BRIDE SAE 1"-1/4 CODE 62 / SAE FLANGE	SERCEL	2
20	295702002	VIS 2 ETAGES AVEC JOINT 1/4 / BOLT 2 LEVEL	PARKER SC4UD1/4-6	1
21	295702003	COUDE BANJO 1 S TUYAU DIA 6 / ELBOW	PARKER CORPB6-13	2
22	400232476_03	FLEXIBLE RALLONGE RENIFLARD / BREATHER HOSE	400232476	1
23	400232476_04	FLEXIBLE RALLONGE RENIFLARD / BREATHER HOSE	400232476	1
24	400235174	RACCORD RENIFLARD / BREATHER FITTING	SERCEL	2
25	400268303	ENTRETOISE PRISE DE PRESSION 1"1/4 6000 /	SERCEL	1

REV D/T	CREATION	PB	16/01/14	BUTIN P.	16/01/14	VISA	DATE	VISA
NATURE DE LA MODIFICATION TYPE OF MODIFICATION	DESSINE/VERIFIE DRAWN/VERIFIED	DATE	APPROUVE APPROVED	DATE	APPROUVE APPROVED	DATE	APPROUVE APPROVED	DATE
MATIERE/MATERIAL:	TRAITEMENT/TREATMENT:	COULEUR/COLOR:		VOLUME: m3		MASSE/WEIGHT: 27388.341 T		
TITRE/TITLE LE PLAN ORIGINAL SIGNE EST AU PLANEX								
N65 Neo ENSEMBLE PONT AV-IFM / ASSY FRONT AXLE								
SUIVANT INSTRUCTION: S902000324								
Echelle: 0,125 Scale: 0,125								
NUMERO DE PLAN / DRAWING REFERENCE S902000324								
SERCEL ETABLISSEMENT DE SAINT GAUDENS								
BP 89 - 31802 SAINT-GAUDENS CEDEX (FRANCE) Tel:(33)0561689500 Fax:(33)05 61689503								
CODE OTAN: E257								
S 904 00 0253/00 Ce document est la propriété de SERCEL ST-GAUDENS. toute reproduction ou diffusion sans son autorisation								
Folio: 1/1								

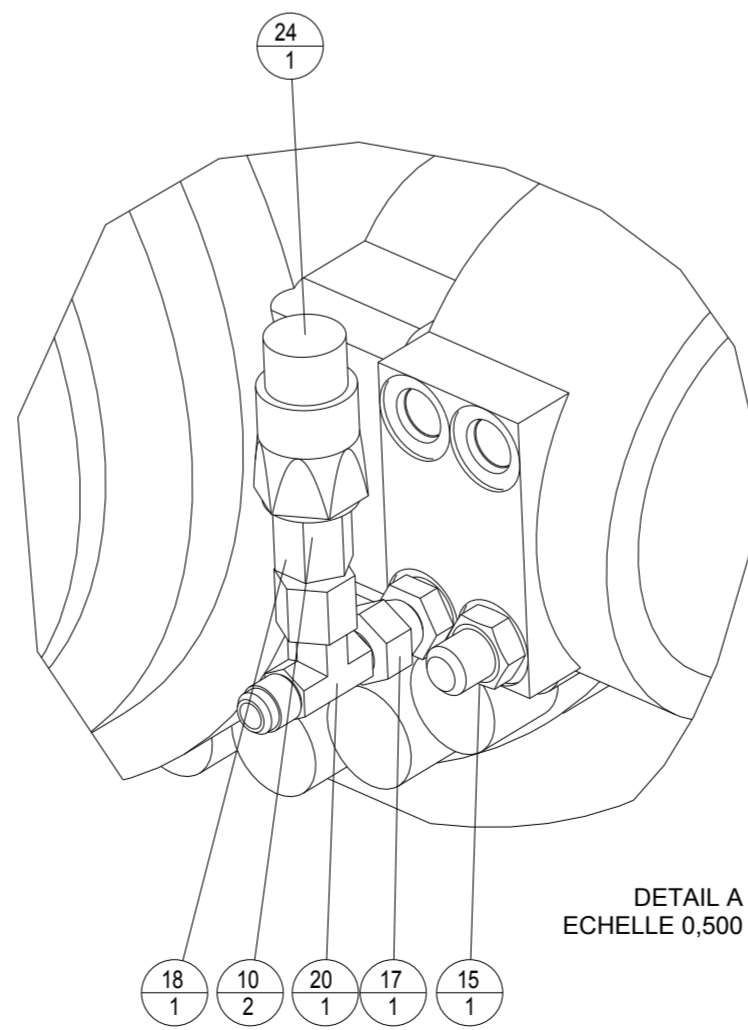


ECHELLE 0,200

Assurer l'étanchéité en utilisant de la pate à joint lors du montage du moteur.



VOIR DETAIL A



DETAIL A
ECHELLE 0,500

REP ITM	CODE SERCEL PART NUM.	DESIGNATION DESCRIPTION	REFERENCE / SPECIF / LA PART NUMBER / SPECIF.	QTE QTY
1	10015165	MOTEUR HYDR. H1 B250 / HYDR. MOTOR H1 B250	SERCEL	1
2	10015167	PONT OMSI 392.98 / AXLE	400150873	1
3	211111453	VIS H M20-60 8.8 Z.B. / BOLT HEX ZINC-PLATED	SERCEL	4
4	211121389	VIS H M12-45 10.9 Z.DEG / BOLT HEX ZINC-PLATED	SERCEL	8
5	211124895	VIS H M24-300 10.9 NOIRE / BOLT HEX ZINC-PLATED	SERCEL	12
6	216421240	ECROU M24, B. PLAST CL10 / NUT LOCK	SERCEL	12
7	217141200	RONDELLE M20,U,Z.B / PLAIN HEAVY DUTY WASHER	SERCEL	4
8	217141240	RONDELLE M24,U,Z.B / PLAIN HEAVY DUTY WASHER	SERCEL	12
9	217941120	RONDELLE, W12 Z.B / WASHER LOCK	SERCEL	8
10	237000801	JOINT CUIVRE Ø8.3 / COPPER SEAL	SERCEL	2
11	237001402	JOINT CUIVRE Ø14.3 / COPPER SEAL	SERCEL	1
12	237403703	JOINT TOR. 37.69 X 3.53 NBR 90 SH / O RING	SERCEL	2
13	271391771	FITTING, 202702-16-16S / ADAPTEUR	790000119	1
14	271714311	ADAPTEUR M/F M14 -1/4BSP / ADAPTOR	SERCEL	1
15	271791331	ADAPTEUR 6M14F82EDMX / FITTING	SERCEL	3
16	271793331	ADAPTEUR, 6M14C8OMXS / FITTING	SERCEL	2
17	271794331	F687XS10M14 / FITTING	SERCEL	1
18	271914311	FITTING G4XS10-1/4 /	SERCEL	1
19	274491331	ADAPTEUR R6XS10 / FITTING T	SERCEL	2
20	274493331	FITTING, S6XS10 / RACCORD	SERCEL	1
21	277470001	DEMI BRIDE SAE 1"-1/4 CODE 62 / SAE FLANGE	SERCEL	2
22	295702003	COUDE BANJO 1 S TUYAU DIA 6 / ELBOW	PARKER CORPB6-13	1
23	295702004	VIS 1 ETAGE AVEC JOINT 1/4 / BOLT 1 LEVEL	SERCEL	1
24	335210010	PRESSOSTAT 10-100 BAR / PRESSURE SWITCH	SERCEL	1
25	400232476_05	FLEXIBLE RALLONGE RENIFLARD / BREATHER HOSE	400232476	1
26	400232476_06	FLEXIBLE RALLONGE RENIFLARD / BREATHER HOSE	400232476	1
27	400235174	RACCORD RENIFLARD / BREATHER FITTING	SERCEL	2

F							
E							
D							
C							
B	ECO 206888	18/04/16	BUTIN P.	18/04/16			
A	CREATION	VIAULES T.	BUTIN P.	14/10/14			
REV D/T	NATURE DE LA MODIFICATION	DESSINE/VERIFIE	DATE	VISA	APPROUVE	DATE	VISA
	TYPE OF MODIFICATION	DRAWN/VERIFIED			APPROVED		
	MATIERE/MATERIAL:				COULEUR/COLOR:		
	TRAITEMENT/TREATMENT:				VOLUME:	m3	
				LE PLAN ORIGINAL SIGNE EST AU PLANEX			
				TOL.GEN/GEN.TOL (SAUF SPECIF.)			
				ETAT DE SURFACE/MACHINE FINISH:			
				SUIVANT INSTRUCTION:			
				S902000324			
				NUMERO DE PLAN / DRAWING REFERENCE			
				Echelle: 0,150			
				Scale:			
				CLQ:			
				PREF:			
				CL :			
				ART :			
				Folio: 1/1			
<p>CE PLAN EST LA PROPRIETE INALIENABLE DE SERCEL ETABLISSEMENT DE SAINT GAUDENS BP 89 - 31802 SAINT-GAUDENS CEDEX (FRANCE) Tel:33(0)561289500 Fax:33(0)5 61289503 S 904 00 0253100 Ce document est la propriété de SERCEL ST-GAUDENS. toute reproduction et diffusion sont interdites sans son autorisation</p>							

3

2

1

F

E

D

C

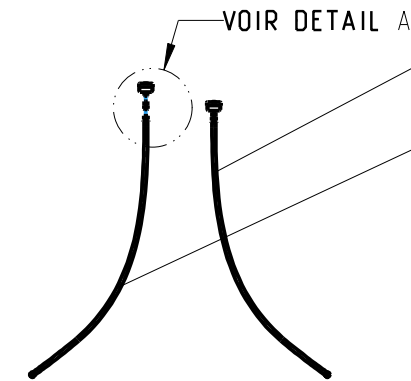
B

A

B

A

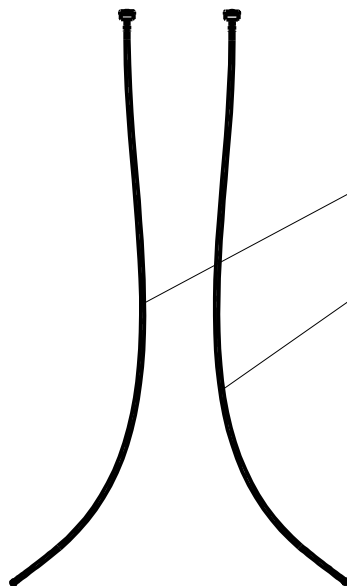
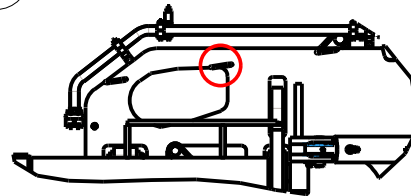
REP ITM	CODE SERCEL PART NUM.	DESIGNATION DESCRIPTION	REFERENCE / SPECIF / LA PART NUMBER / SPECIF.	QTE QTY
1	10018166	RENIFLARD DE PONT / BREATHER	SERCEL	4
2	10018436	FITTING 6G4MXS /	SERCEL	4
3	400232476_01	FLEXIBLE RALLONGE RENIFLARD / BREATHER HOSE	400232476	1
4	400232476_02	FLEXIBLE RALLONGE RENIFLARD / BREATHER HOSE	400232476	1
5	400264566_01	FLEXIBLE RALLONGE RENIFLARD / BREATHER HOSE	400264566	1
6	400264566_02	FLEXIBLE RALLONGE RENIFLARD / BREATHER HOSE	400264566	1



4
1

ensemble reniflard du pont avant.
à attacher à l'aide de tyrops
au maillon de chaîne soudé
sur l'articulation du châssis.

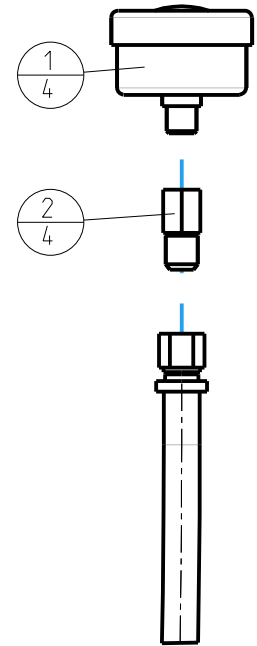
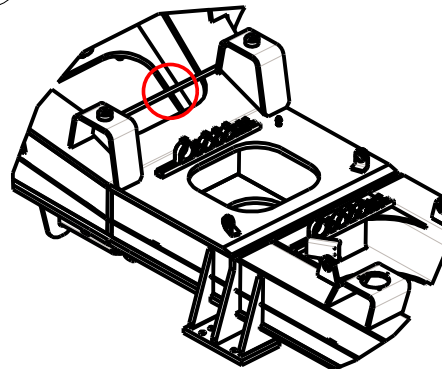
3
1



5
1

ensemble reniflard du pont arrière.
à attacher à l'aide de tyrops
à proximité du reniflard
de la boîte de vitesse

6
1



1
4

2
4

DETAIL A
ECHELLE 0.300

F								
E								
D								
C								
B								
A	CREATION	VIAULES T.	03-Jun-14		BUTTIN P.	03-Jun-14		
REV D/T	NATURE DE LA MODIFICATION TYPE OF MODIFICATION	DESSINE/VERIFIE DRAWN/VERIFIED	DATE	VISA	APPOUVE APPROVED	DATE	VISA	

MATIERE/MATERIAL:

COULEUR/COLOR:

MASSE/WEIGHT:
56.145.202 T

TRAITEMENT/TREATMENT:

VOLUME: m3

TITRE/TITLE

LE PLAN ORIGINAL SIGNE EST AU PLANEX

TOL.GEN./GEN.TOL.(Sauf specif):

N65

ETAT DE SURFACE/MACHINE FINISH:

KIT FLEXIBLE RENIFLARD / BREATHER HOSE KIT

SUIVANT INSTRUCTION:
S902000324



CE PLAN EST LA PROPRIETE INALIENABLE DE
SERCEL ETABLISSEMENT
DE SAINT GAUDENS

NUMERO DE PLAN / DRAWING REFERENCE
PE004604390094

Echel: 0,030
Scale
CLO:
/REF
CL:
ART
Folio: 1/1

CODE OTAN : F2577

BP 69 - 31802 SAINT-GAUDENS CEDEX (FRANCE)
Tel: (33) (0) 56 18 99 000 Fax: (33) (0) 5 61 89 90 33

S 904 00 0233/00 Ce document est la propriété de SERCEL ST-GAUDENS, toute reproduction et diffusion sont interdites sans son autorisation

B

A

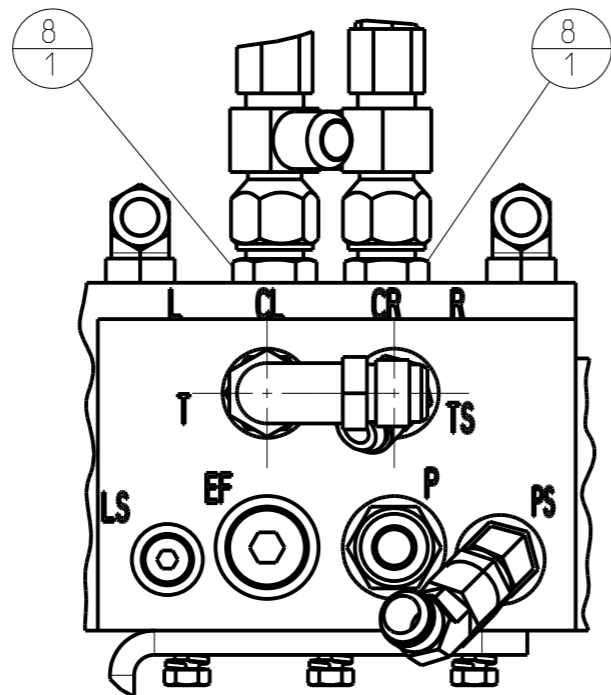
REP ITM	CODE SERCEL PART NUM.	DESIGNATION DESCRIPTION	REFERENCE / SPECIF. / LA PART NUMBER / SPECIF.	QTE QTY
1	211111287	VIS H M8-25 8.8 ZB. / BOLT HEX	SERCEL	3
2	217941080	RONDELLE, W8 Z.B / WASHER LOCK	SERCEL	3
3	264300001	VALVE DE DIRECTION / STEERING VALVE	SERCEL	1
4	271493552	ADAPTEUR 504095 10S / FITTING	SERCEL	1
5	271700202	BOUCHON M12x1.5 / PLUG	SERCEL	1
6	271700702	BOUCHON M22x1.5 / PLUG	SERCEL	1
7	271791552	ADAPTEUR 10M18F870MXS / FITTING	SERCEL	1
8	271791561	ADAPTEUR 8M18F870MXS / FITTING	SERCEL	2
9	271791762	ADAPTEUR 12M22F870MXS / FITTING	SERCEL	1
10	271793541	ADAPTEUR, 8M18C870MXS / FITTING	SERCEL	2
11	271795541	FITTING, 8M18V870MXS / ADAPTEUR	SERCEL	2
12	274491441	ADAPTEUR R6XS12 / FITTING T	SERCEL	2
13	211111329	VIS H M 12-30 8.8 ZB. / BOLT HEX	SERCEL	2
14	217141120	RONDELLE M12 , U , Z.B / WASHER FLAT	SERCEL	2
15	271492441	V6XS12 /	SERCEL	3
16	400220454	SUPPORT VALVE DIRECTION / SUPPORT	SERCEL	1

POUR LES VIBRATEURS SUR CHENILLES: $\triangleleft B$

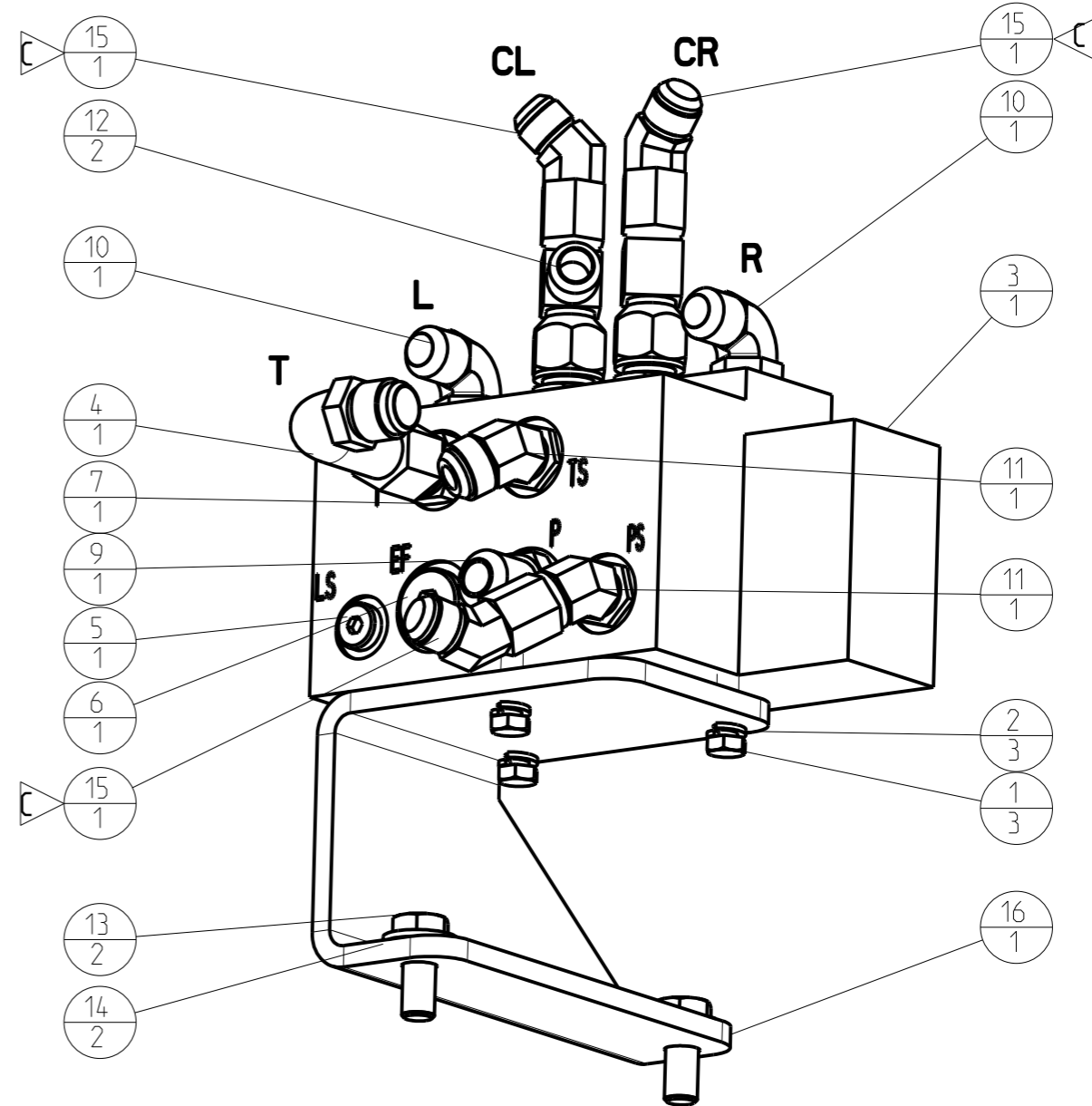
REGLER LE LIMITEUR DE PRESSION A 160 BAR
REEMPLACER LES SOUPAPES ANTICHOCS PAR LES SOUPAPES 264300001K02

FOR TRACK VIBRATOR:

SET PRESSURE RELIEF VALVE TO 160 BAR (2285 PSI)
REPLACE SHOCK VALVES BY VALVES 264300001K02



ECHELLE 0.400



F									
E									
D	T				<i>Signé</i>				<i>Signé</i>
C	T	DM08 4435	SOUM D.	19/06/08	<i>D. Soum</i>	BUTTIN P.	19/06/08		<i>P. Buttin</i>
B	D	DM 083976	PB	24/01/08		PB	24/01/08		
A		CREATION	SOUM D.	05/06/07		BUTTIN P.	05/06/07		
REV D/T	NATURE DE LA MODIFICATION TYPE OF MODIFICATION	DESSINE/VERIFIE DRAWN/VERIFIED	DATE	VISA	APPROUVE APPROVED	DATE	VISA		
MATIERE/MATERIAL:				COULEUR/COLOR:		MASSE/WEIGHT: 0,020 T			
TRAITEMENT/TREATMENT:				VOLUME: m3		TOL. GEN./GEN.TOL. (Sauf specif):			
TITRE/TITLE NOMAD VALVE DE DIRECTION EQUIPEE / ASSY. STEERING VALVE						LE PLAN ORIGINAL SIGNE EST AU PLAN EX ETAT DE SURFACE/MACHINE FINISH: SUIVANT INSTRUCTION: S902000324			
CE PLAN EST LA PROPRIETE INALIENABLE DE Sercel SERCEL ETABLISSEMENT DE SAINT GAUDENS			NUMERO DE PLAN / DRAWING REFERENCE PE003604430203			Echel: 0,400 Scale /REF CL : 04 ART Folio: 1/1			
BP 69 - 31802 SAINT-GAUDENS CEDEX (FRANCE) Tel:(33)(0)561899000 Fax:(33)(0)5 61899033			CODE OTAN : F2577			S 904 00 0233/00 Ce document est la propriété de SERCEL St-GAUDENS, toute reproduction et diffusion sont interdites sans son autorisation			

D

C

B

DRW 604430203 Version AC

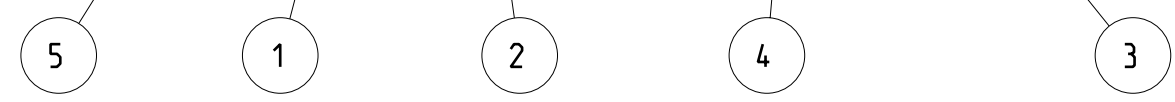
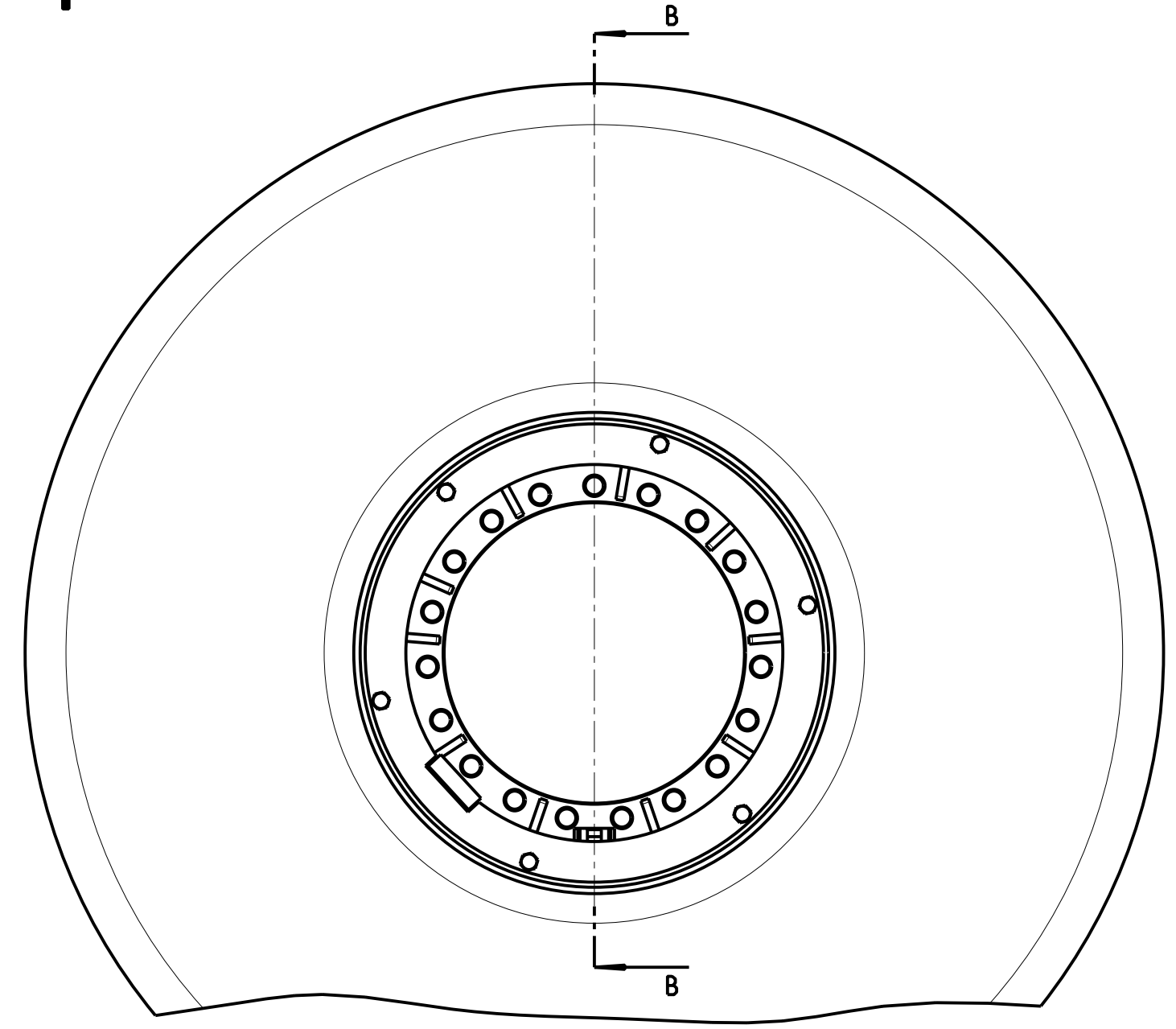
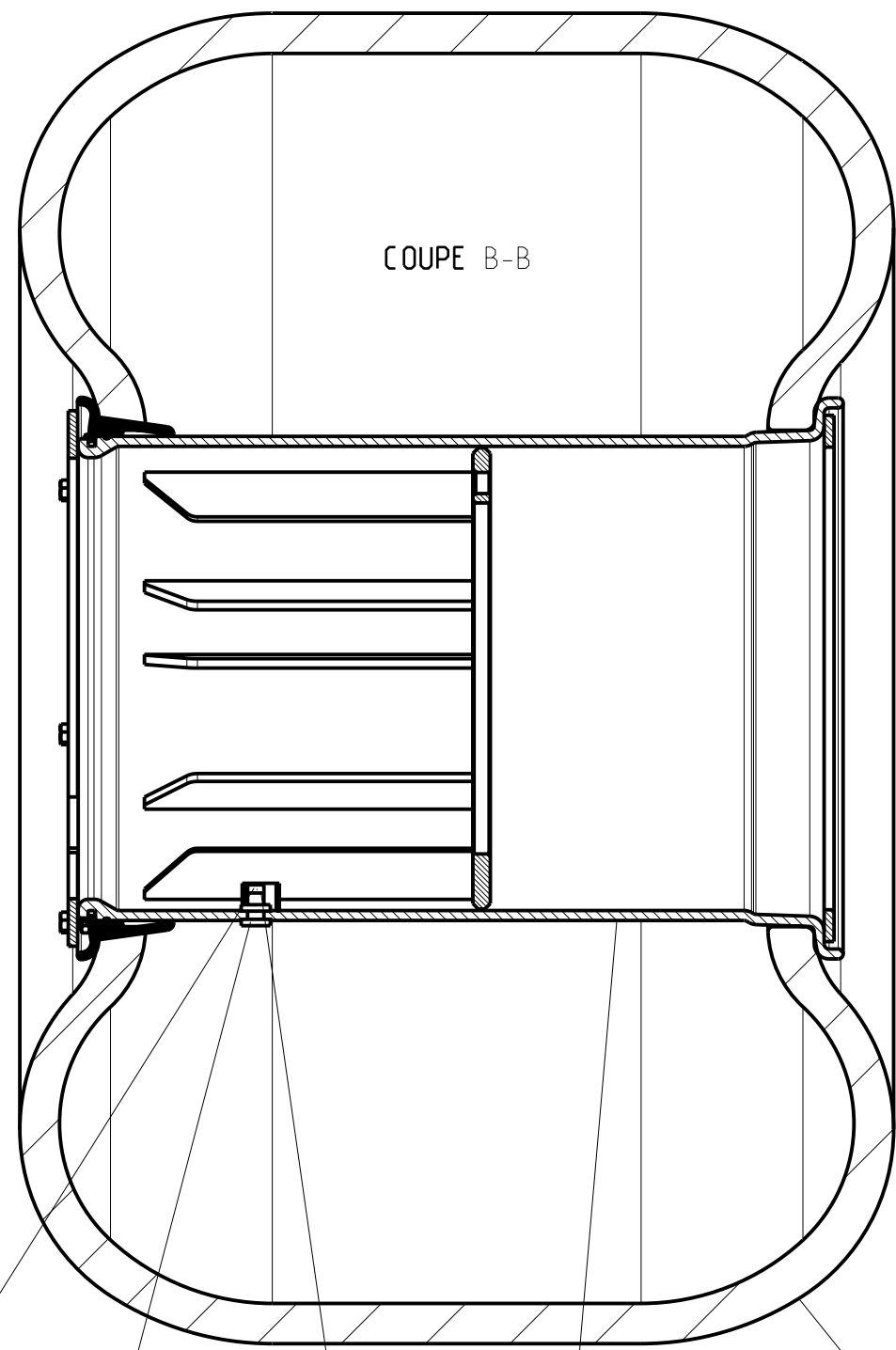
A

D

C

B

A



REP ITM	CODE TYPE TYPE NUMBER	CODE SERCEL PART NUM.	DESIGNATION DESCRIPTION	REFERENCE / SPECIF / LA PART NUMBER / SPECIF.	QTE QTY	Long/ou volume
1		254000014	VALVE CAMION	SERCEL	1	
2		254000030	CAPUCHON VALVE	SERCEL	1	
3		254100036	TIRE, 66X44-25 16PLY FLOT HF-1	TITAN	1	
4	PE003	604510123	JANTE COMPLETE SANS W.W.	SERCEL	1	
5		790002258	REDUCT VALVE	2298246	1	

F									
E									
D									
C	T	DM04 0353	GUILLON	08-09-04	PB	08-09-04			
B	T	DM04 0353	GUILLON	08-09-04	BUTTIN P.	08-09-04			
A		CREATION	GUILLON	04-May-10	BUTTIN P.	04-May-10			
REV D/T	NATURE DE LA MODIFICATION TYPE OF MODIFICATION	DESSINE/VERIFE DRAWN/VERIFIED	DATE	VISA	APPOUVE APPROVED	DATE	VISA		

MATIERE/MATERIAL:	COULEUR/COLOR:	MASSE/WEIGHT: 75631203,576 T
TRAITEMENT/TREATMENT:	VOLUME: m3	

TITRE/TITLE: **NOMAD**
ROUE COMPLETE SANS W.W. / WHEEL ASSY

LE PLAN ORIGINAL SIGNE EST AU PLANEX

CE PLAN EST LA PROPRIETE INALIENABLE DE **SERCEL ETABLISSEMENT DE SAINT GAUDENS**

NUMERO DE PLAN / DRAWING REFERENCE: **PE003 604510133**

BP 69 - 31802 SAINT-GAUDENS CEDEX (FRANCE)
 Tel: (33)(0)561899000 Fax: (33)(0)5 61899033

Code OTAN : F2577

ETAT DE SURFACE/MACHINE FINISH: SUIVANT INSTRUCTION: **S902000324**

Echel: **0,10**
 Scale
 CLQ:
 /REF
 CL : **04**
 ART
 Folio: **1/1**

S 904 00 0233/00 Ce document est la propriété de SERCEL St-GAUDENS, toute reproduction et diffusion sont interdites sans son autorisation

D

C

B

A

DRW 604510133 Version AC